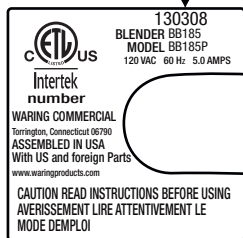


Unit Date Code



SAMPLE Data Decal

NOTE:

3 Part Changes
Starting With **Unit Date Code 130308**
That Can **NOT** be
Interchanged With Previous
Unit Date Codes

Blade Assembly - Coupling - Motor

WARING COMMERCIAL®

NuBlend Commercial Blenders
with Electronic Membrane Keypad

BB185

44 oz. Eastman container

BB185S

32 oz. stainless steel container

Marked for Deletion

NDG185 (on 3/6/2013)

Next Day Gourmet 44 oz. Eastman container

Unit Information

Limited 2 Year Warranty

60Hz - 5 Amps

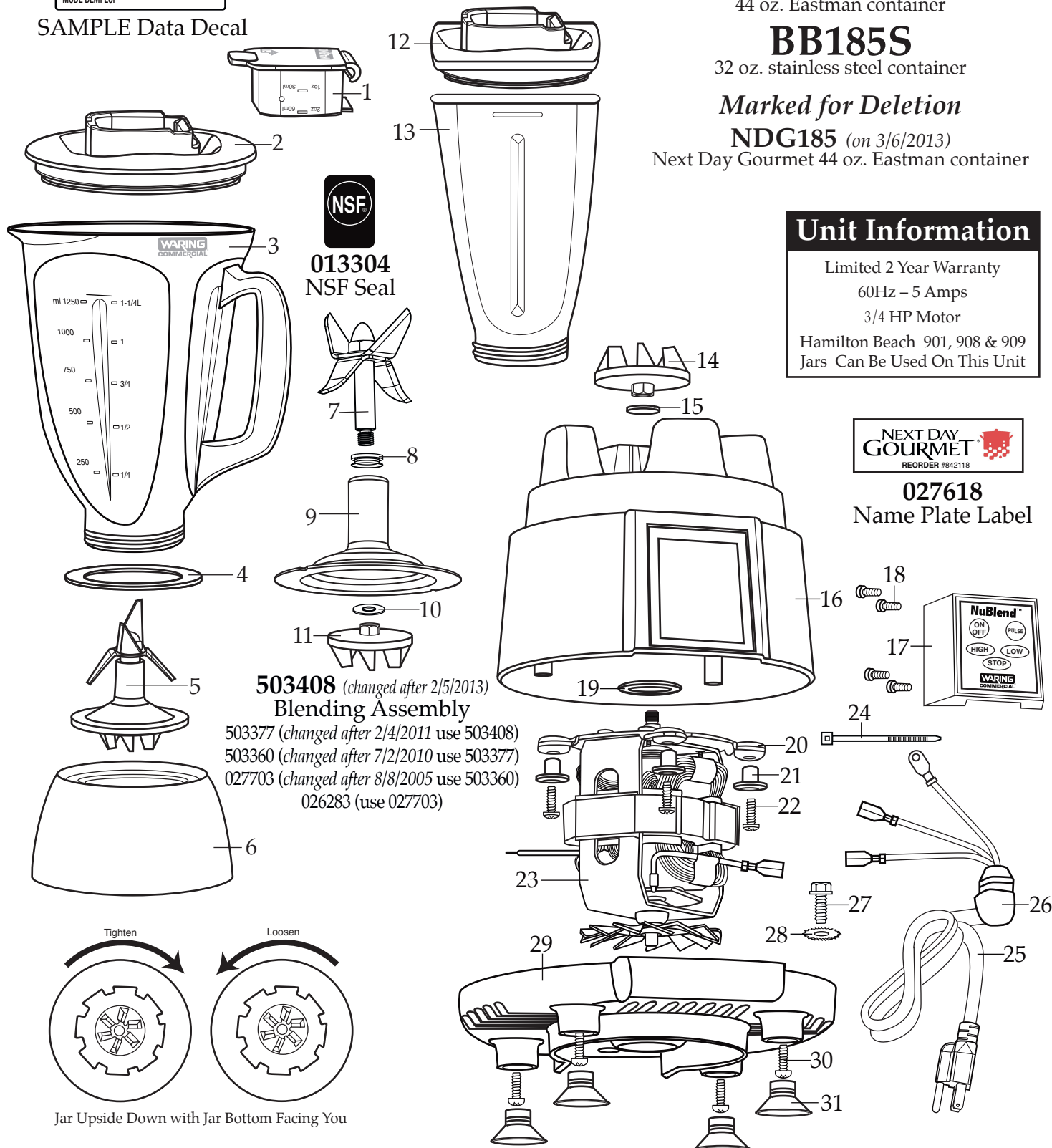
3/4 HP Motor

Hamilton Beach 901, 908 & 909
Jars Can Be Used On This Unit



027618

Name Plate Label



Catalog**Model**

BB185 **BB185P** **BB185 MT (Type 25)**
 (on units after 2/15/2010) (on units after 10/5/2004)

BB185T **BB185**
 (on units after 8/25/2003)

BB185S **BB185S** **BB185S MT (Type 25)**
 (on units after 2/15/2010) (on units after 10/5/2004)

Marked for Deletion

NDG185 **BB185P** **BB185 MT (Type 25)**
 (on units after 2/15/2010) (on units after 10/5/2004)

WARING
COMMERCIAL

314 Ella T. Grasso Ave.
 Torrington, CT 06790
 Tele. 1-800-269-6640
 Fax 860-496-9017
www.waringcommercialproducts.com

Illustration#	Part#	Description
1	026282-E	Cover Lid (changed after 10/27/2010)
2	026281-V	Jar Lid (changed after 10/27/2010)
3	026280-E	44 oz. Eastman Container (changed after 10/27/2010)
4	026284	Jar Seal
5	503408	Blending Assembly (on units after 3/8/2013)
6	026285	Jar Bottom
7	503407	Blade Assembly (on units after 3/8/2013)
	503378	Blade & Shaft Assembly
8	027716	V Seal
9	503358	Bearing Holder
10	030426	Nylon Washer
11	032453	Coupling (on units after 3/8/2013)
	027097	Coupling
12	026852-V	Jar Cover
13	026851	32 oz. Stainless Steel Container
14	032453	Coupling (on units after 3/8/2013)
	027097	Coupling
15	035756	Cap Washer (on units after 9/6/2016)
	026413	Cap Washer (on units after 6/1/2011)
	003507	Washer
16	028212	Top Housing (changed after 4/18/2006)
17	026266	Control Module Panel
18	026267	Screw (4 required)
19	026269	Upper Motor Mount
20	026841	Rubber Bushing (4 required)
21	026690	Eyelet (4 required)
22	026716	Screw (4 required)
23	033056	ECM Motor (on units after 2/5/2013)
	029794	ECM Motor
24	013731	Cable Tie
25	502835	Cord Set
26	013680	Strain Relief
27	027278	Ground Screw (on units after 7/10/2006)
	002436	Ground Screw

Catalog

Model

BB185 **BB185P** **BB185 MT (Type 25)**
(on units after 2/15/2010) (on units after 10/5/2004)
BB185T **BB185**
(on units after 8/25/2003)

BB185S **BB185S** **BB185S MT (Type 25)**
(on units after 2/15/2010) (on units after 10/5/2004)

Marked for Deletion

NDG185 **BB185P** **BB185 MT (Type 25)**
(on units after 2/15/2010) (on units after 10/5/2004)

WARING
COMMERCIAL

314 Ella T. Grasso Ave.

Torrington, CT 06790

Tele. 1-800-269-6640

Fax 860-496-9017

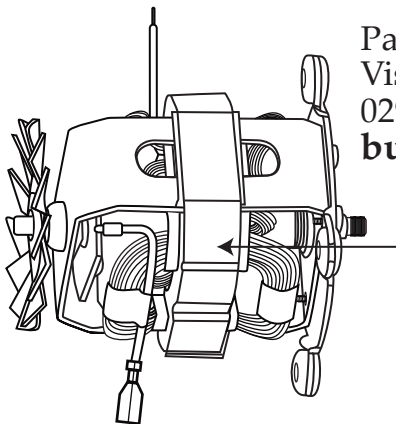
www.waringcommercialproducts.com

Illustration#

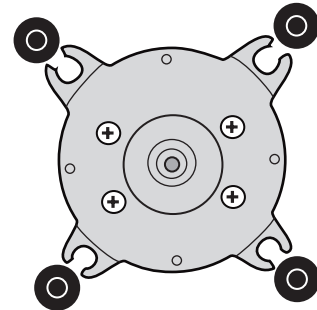
Part#

Description

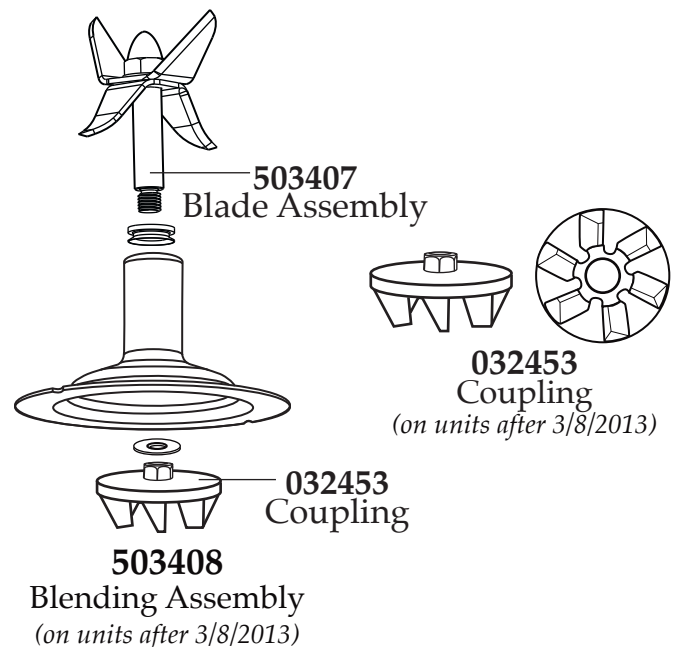
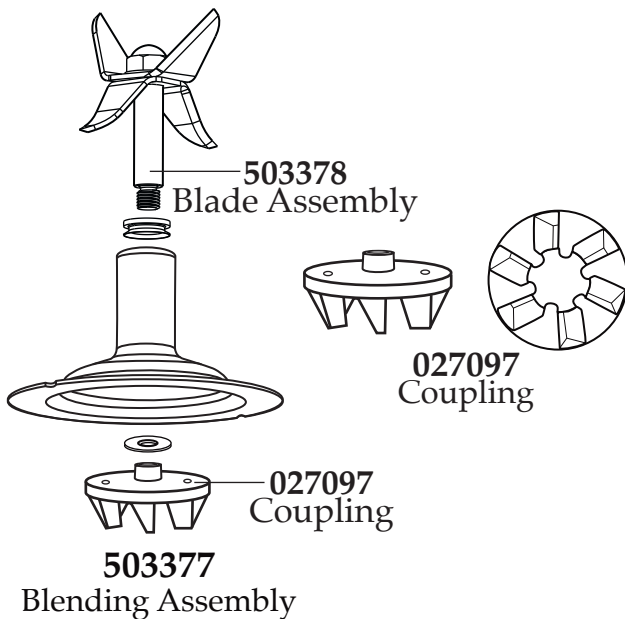
28	002943	Lock Washer
29	028580-X	Bottom Housing ONLY <i>(on units after 10/11/2007)</i>
	026464	Bottom Housing ONLY <i>(on units after 2/22/2005)</i>
	027063	Bottom Housing ONLY <i>(on units after 8/26/2003)</i>
	502919	Bottom Housing with Reset Switch Assembly <i>(on units after 8/26/2003)</i>
	026464	Bottom Housing ONLY
30	026276	Screw (4 required)
31	026278	Suction Cup Foot (4 required)



Part # is printed on each motor
 Visually you may think motors
 029794 & 033056 are the same
but they are not.



Top View 029794 or 033056 Motor



Catalog

Model

BB185

BB185P (on units after 2/15/2010) **BB185 MT (Type 25)** (on units after 10/5/2004)

BB185T (on units after 8/25/2003)

BB185

BB185S

BB185S (on units after 2/15/2010) **BB185S MT (Type 25)** (on units after 10/5/2004)

Marked for Deletion

NDG185

BB185P (on units after 2/15/2010) **BB185 MT (Type 25)** (on units after 10/5/2004)

WARING
COMMERCIAL

314 Ella T. Grasso Ave.

Torrington, CT 06790

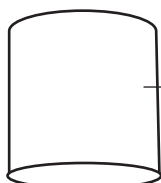
Tele. 1-800-269-6640

Fax 860-496-9017

www.waringcommercialproducts.com

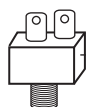
Parts No Longer Used

(limited availability)



027053 - Shroud (last used on 2/4/2010)

026669 - Shroud (last used on 8/26/2003)



027052 - Reset Switch
(last used on 2/22/2005)



014604 - Lock Washer
(last used on 2/22/2005)



015184 - Hex Nut
(last used on 2/22/2005)

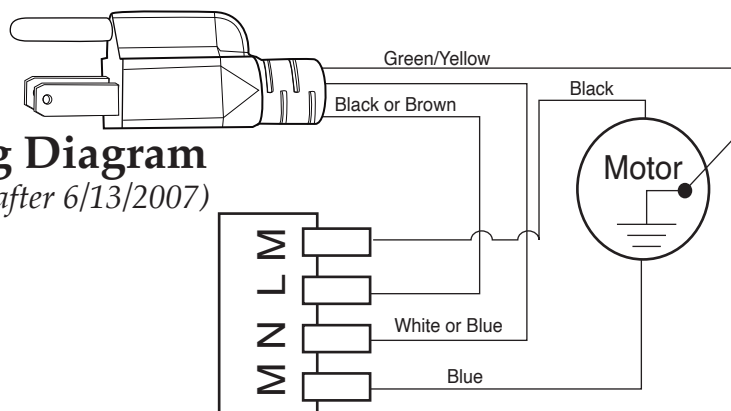


502924

10" Brown Lead Assembly
(last used on 2/22/2005)

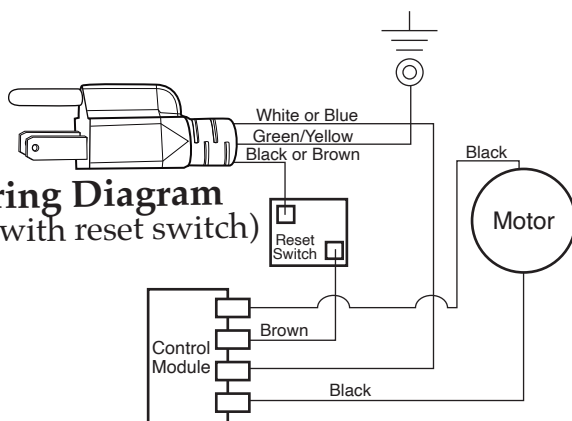
Wiring Diagram

(on units after 6/13/2007)



Wiring Diagram

(units with reset switch)



Wiring Diagram

